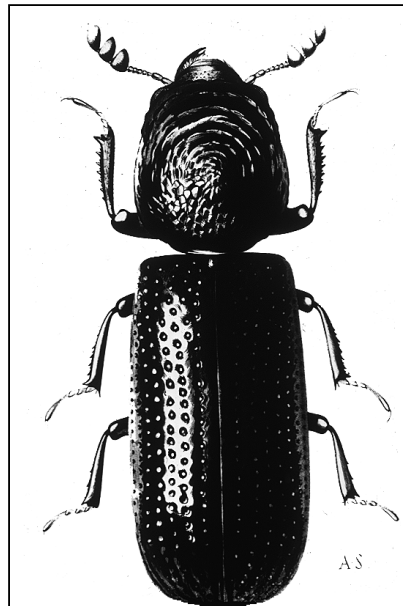


Lesser grain borer, *Rhyzopertha dominica*



Archive material courtesy of the Central Science Laboratory, York. UK Crown Copyright.

Lesser grain borer, <i>Rhyzopertha dominica</i>	
Major pest of whole cereal grains, most serious in hot dry conditions. The pre-adult stages are difficult to spot in the tunnels which the insect bores in the grain. It is resistant to organophosphate insecticides and must be controlled by methoprene or bioresmethrin or fumigation.	
Life cycle	Optimum: 25 days at 34°C, 70% relative humidity Range: 20–38°C, minimum relative humidity 30%
Maximum population growth rate per month	20 times
Biology	Eggs: Laid in clusters as females bore through grains Larvae: Mobile while young, becoming immobile when older. The larvae live concealed within grain or flour. Adult: Long lived, feeds, and is a strong flier. Adept burrowers producing large quantities of flour. Size: 2.5-3.0 mm.

Scroll down the page for the next pest, or click here to return to [the menu of pests](#).