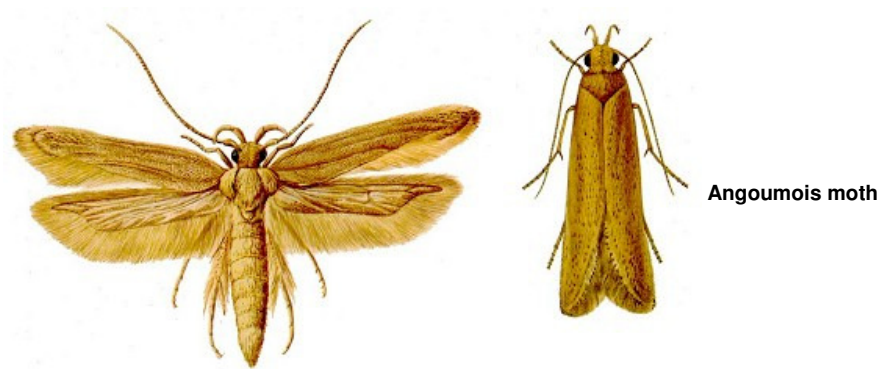


Home

Photo Page



Moth pests



Angoumois moth

Angoumois moth, Tropical warehouse moth and Indian moth

Moth larvae (grubs) can destroy stored grains. The larvae leave silken webs on the surface of the grain mass, but are more often a problem in bagged rather than bulk commodities. Larvae are important pests of flour mills, food processing plants and dried fruit. Larvae are harder to kill than adult moths.

Adult moths are short-lived and do not feed. They can be seen flying above the grain, particularly at dusk. Moths multiply rapidly at optimum conditions, i.e., 30 °C, 75% relative humidity.



Tropical warehouse moth



Indian moth