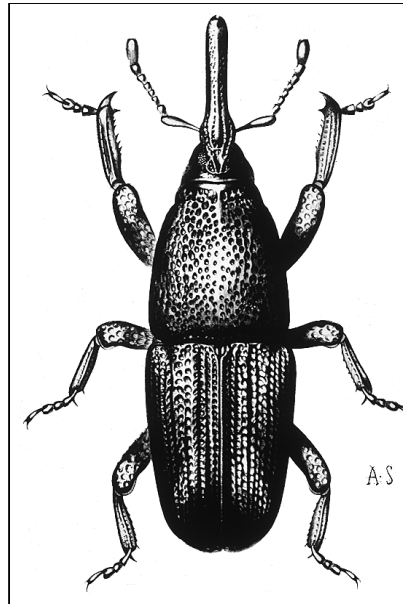


Rice, maize or granary weevils, *Sitophilus spp.*



Archive material courtesy of the Central Science Laboratory, York. UK Crown Copyright.



Photograph reproduced with permission of CSIRO Australia.

Rice, maize or granary weevils, <i>Sitophilus spp.</i>	
Major pests of whole cereal grain and some solid cereal products, e.g. pasta. Easily identified by the snout. These insects spend all their pre-adult stages hidden within the grain. They infest only whole grain. When pre-adult, especially in the pupal stage, they are difficult to kill by phosphine fumigation.	
Life cycle (<i>S. oryzae</i>)	Optimum: 25 days at 30°C, 70% relative humidity Range: 14–35°C, minimum relative humidity 40%
Maximum population growth rate per	25 times

month	
Biology	Eggs: Laid singly in prepared hole in grain and covered with waxy plug Larvae: Immobile, develop concealed within a single grain Adult: Long lived, feeds, winged species fly. Size: <i>S. oryzae</i> —2.0-3.0 mm, <i>S. granarius</i> —2.0-4.0 mm, <i>S. zea</i> —3.0 mm

Click here to return to [the menu of pest profiles](#).

Click here to advance to [the next pest](#).