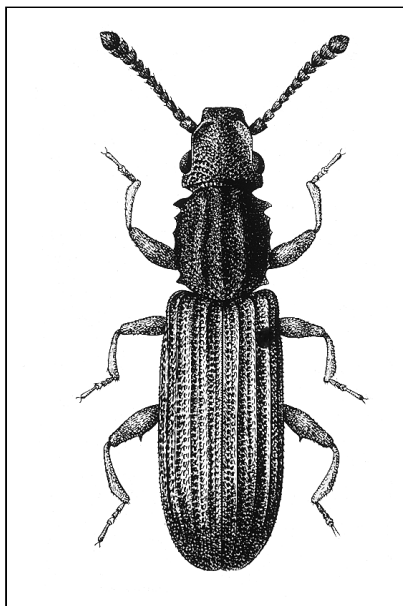
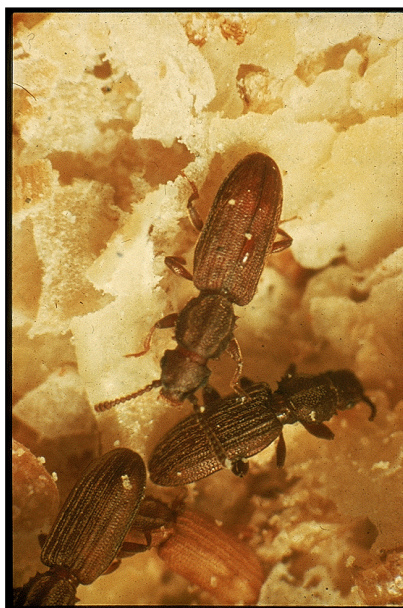


Saw toothed grain beetle, *Oryzaephilus surinamensis*



Archive material courtesy of the Central Science Laboratory, York. UK Crown Copyright.



Photograph reproduced with permission of CSIRO Australia.

Saw toothed grain beetle, <i>Oryzaephilus surinamensis</i>	
Dark brown to grey, easily distinguished by the ridges on its thorax. Major pest of grain and milled grain products, and other stored foods. Resistant to grain protectants in many regions	
Life cycle	Optimum: 20 days at 33°C, 80% relative humidity Range: 18–38°C, 10 - 90% relative humidity, survives very cold conditions
Maximum	50 times

population growth rate per month	
Biology	Eggs: Laid at random Larvae: Mobile, not concealed Adult: Long lived, feeds, flies, will rapidly walk long distances. Can easily enter packaged food. Size: 2.5-3.0 mm.

Click here to profile the next pest on our list, [the red rust flour beetle](#).

Click here to return to [the menu of pests](#).